



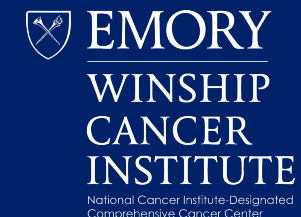
THE GEORGIA BLOOD CANCER TRIALS NETWORK

Jonathon B. Cohen, MD MS

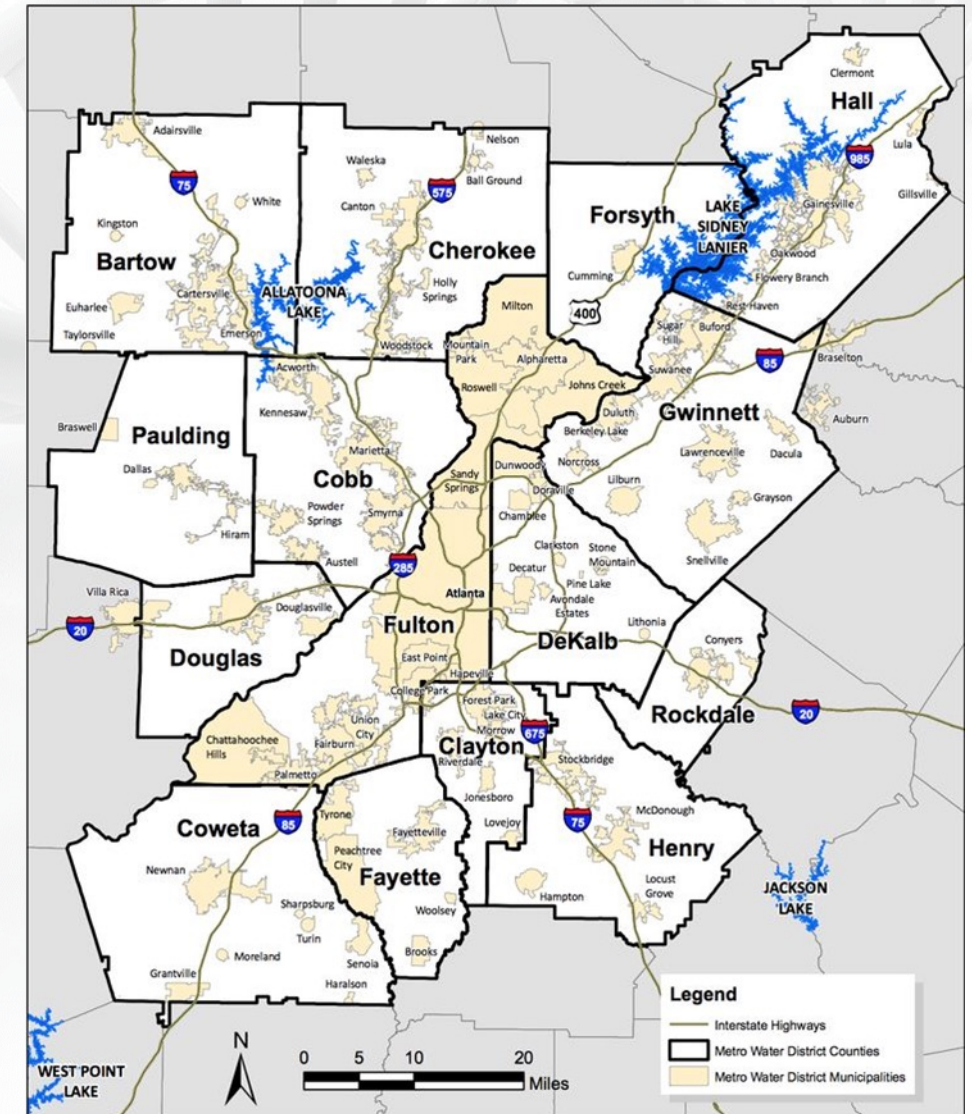
Co-Director Lymphoma Program

Associate Professor, Hematology and Medical
Oncology

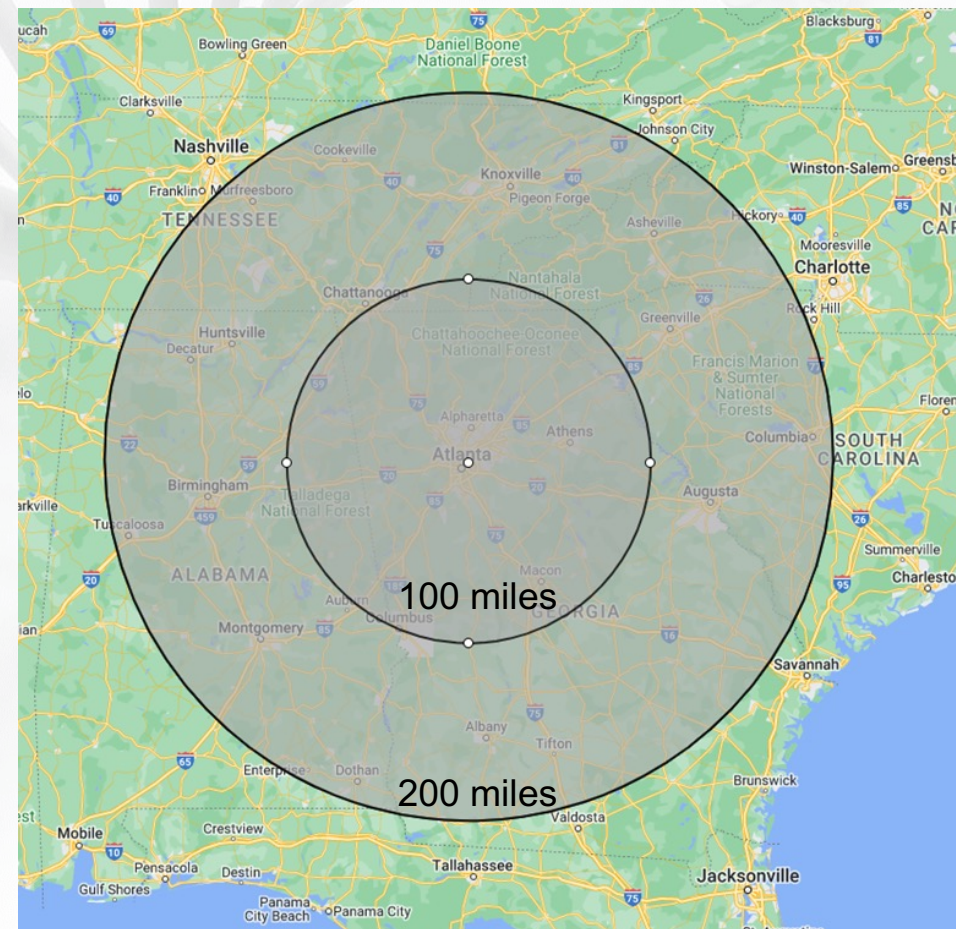
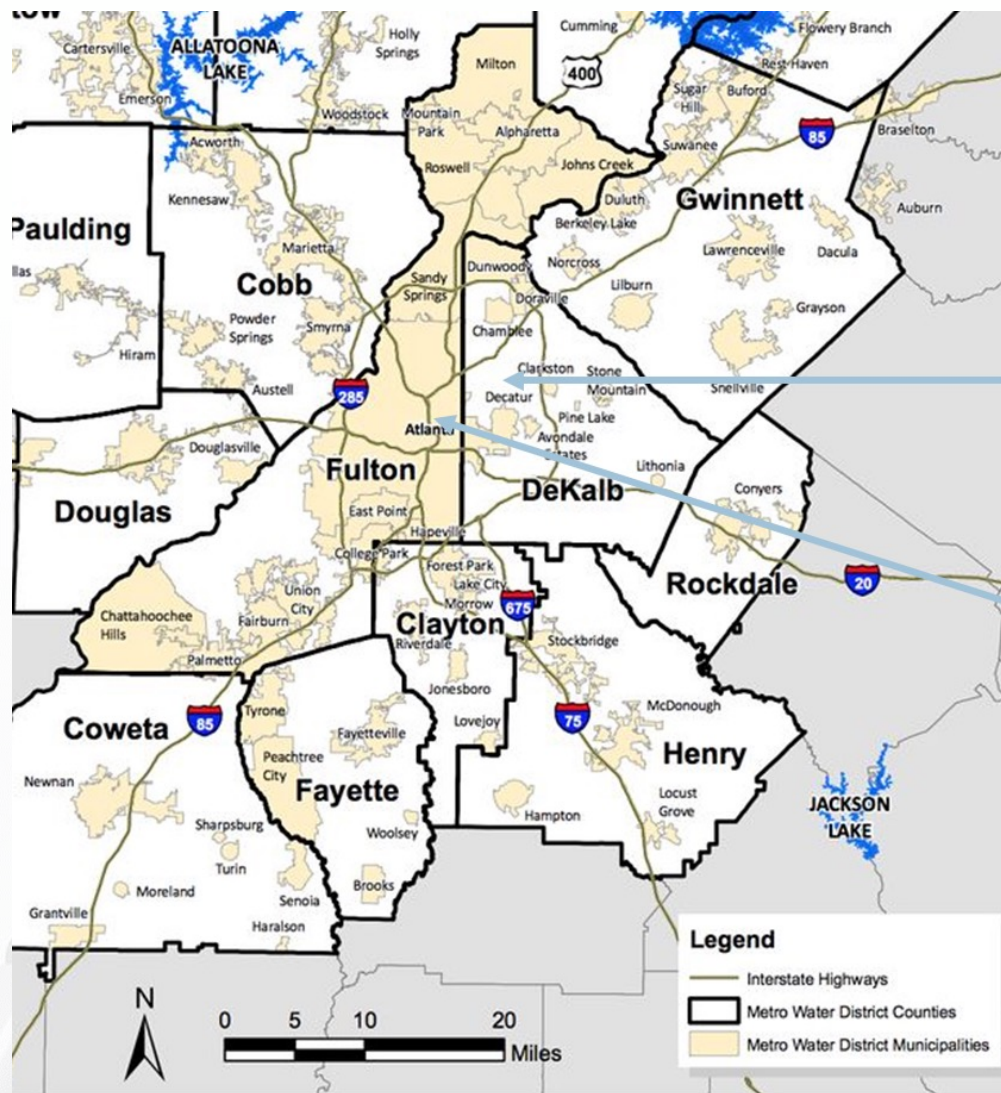
Emory University – Winship Cancer Institute



WHY IS A TRIALS NETWORK NEEDED?



DISTANCE TO WINSHIP CAN BE DIFFICULT FOR MANY



GEORGIA DEMOGRAPHICS

- 8th most populous state in the country – population approaching 11m
 - 3.3million Black/African American
 - 1.1million Hispanic
- Atlanta is 6th largest metro area in country

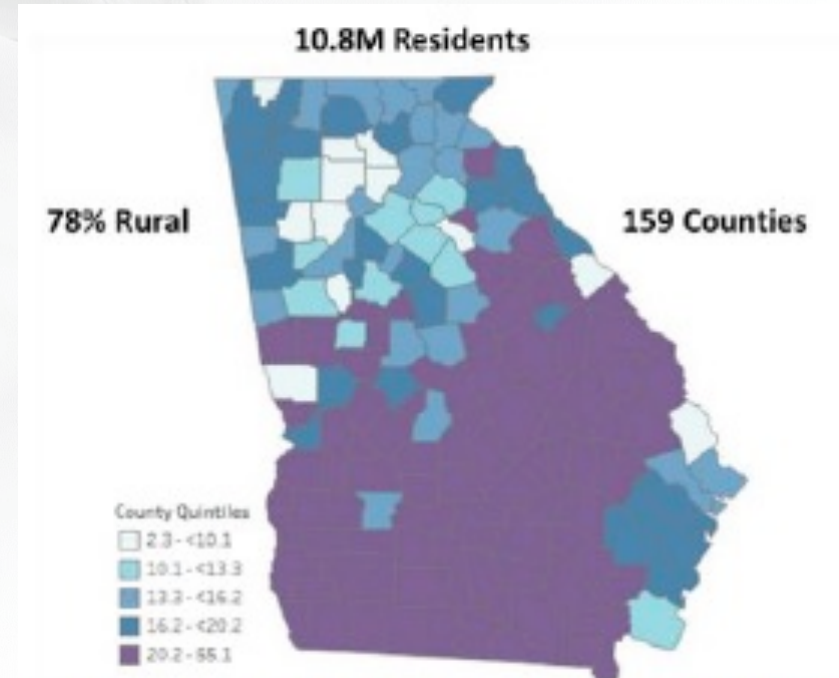


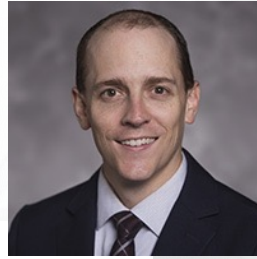
Figure 2. Poverty Rate in Georgia Counties

CHALLENGES WITH ACCRUAL TO HEMATOLOGY TRIALS

- Often uncommon, aggressive diseases which require intensive management.
- Patients more likely to require transfusion support and other intensive care.
- Travel to primary site can be very cumbersome and available only to people with resources.
 - Roughly 1/3 of patients enrolled to lymphoma non-therapeutic studies are from > 50 miles away
- Patients frequently not aware of availability and appropriateness of trials.

The Georgia Blood Cancer Trials Network (BCTN) is designed to leverage resources throughout the state to increase participation in therapeutic clinical trials by patients with hematologic malignancies.

GEORGIA BLOOD CANCER TRIALS NETWORK (BCTN)



Jonathon B. Cohen, MD
Director

Winship Clinical Trials Office
Quality Management/DSMC

Steering Committee

Melissa Kives, MPH
Program Manager

Georgia CORE

Winship Cancer Network

Winship Sites/Grady

- Grady Memorial Hospital
- Emory Univ Hospital Midtown
- Emory St. Joseph's Hospital
- Emory Johns Creek Hospital



Annelise Dutton, MPH, BSN, RN
Clinical Research Nurse

TBN
Clinical Research Coordinator



LEUKEMIA &
LYMPHOMA
SOCIETY®

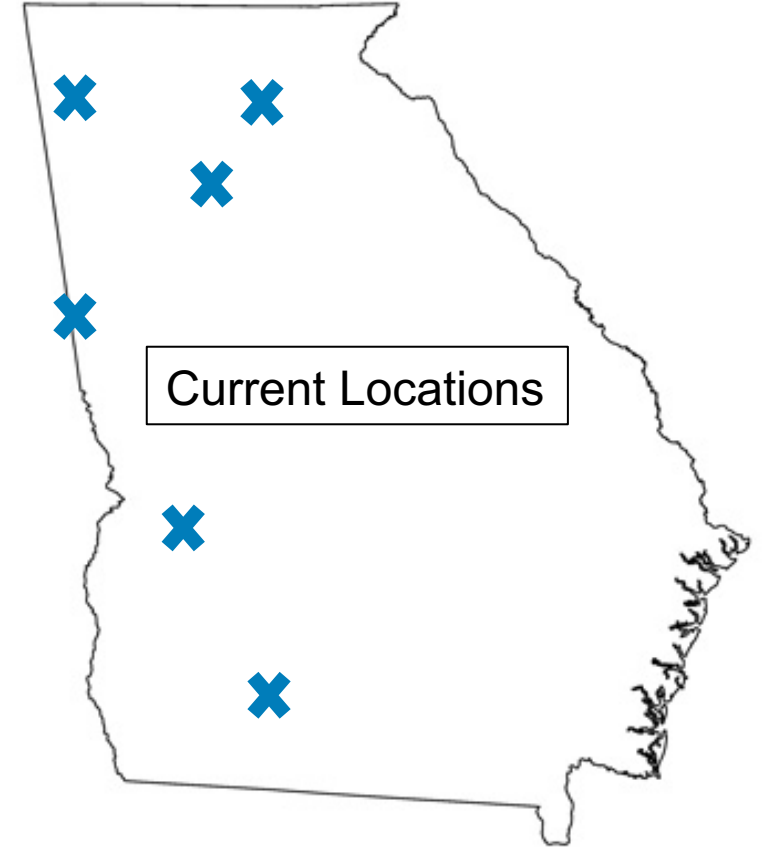


NATIONAL
CANCER
INSTITUTE

GEORGIA

core

CENTER for ONCOLOGY
RESEARCH & EDUCATION



IMPACT Key Investigators:
Lymphoma: Cohen, Allen, Lopez
Myeloma: Joseph
Leukemia/Myeloid Diseases: Hunter

1R50CA276010 – Clinician Scientist Award

KEY LEADERS AT EMORY

Steering Committee Member	Role
Dr. Jonathon B. Cohen, Chair	Georgia BCTN / IMPACT Director
Dr. Pamela Allen	Lymphoma Leader
Dr. Nisha Joseph	Myeloma Leader
Dr. Anthony Hunter	Leukemia/Myeloid Disease Leader
Dr. Carlos Lopez	Leader, Grady Memorial Hospital / Winship sites
Dr. Amelia Langston	Medical Director, Winship Cancer Network
Dr. Theresa Gillespie	Associate Director, Community Outreach and Engagement
Dr. Sheryl Gabram	Chief Scientific Officer, Georgia CORE
Mr. Ildemaro Gonzales	Chief Diversity Officer, Winship Cancer Institute



Annelise Dutton
Clinical Research Nurse



Ashley Turner
Project Coordinator



Melissa Kives
Program & Research Manager

IDEAL STUDIES FOR THIS MECHANISM

- Low grade/precursor entities
- Outpatient treatment with currently FDA approved therapies
- Modest follow-up schedule
- Lack of need for specialized inpatient care
- Meets a need of the community
- Cooperative Group, Industry-sponsored, or Investigator-sponsored trials
- Please tell us if there's a patient group in need of trials.

TRIALS IN THE NETWORK

Disease Group	Cooperative Group	IIT	Industry
Leukemia			ASC2ESCALATE
Lymphoma	S1918 A052101	Winship 5186-20	
Myeloma	EA1173 10440*		
* Available to EJC and Grady only, pending approval by the multi-site team			

ASC2ESCALATE: A PHASE II MULTICENTER, OPEN-LABEL, SINGLE-ARM DOSE ESCALATION STUDY OF ASCIMINIB MONOTHERAPY IN 2ND AND 1ST LINE CHRONIC PHASE CML.

S1918: A PHASE II/III RANDOMIZED STUDY OF R-MINICHOP WITH OR WITHOUT ORAL AZACITIDINE (CC-486) IN PARTICIPANTS AGE 75 YEARS OR OLDER WITH NEWLY DIAGNOSED DIFFUSE LARGE B CELL LYMPHOMA, GRADE IIIB FOLLICULAR LYMPHOMA, TRANSFORMED LYMPHOMA, AND HIGH-GRADE B-CELL LYMPHOMAS WITH MYC AND BCL2 AND/OR BCL6 REARRANGEMENTS.

A052101: A RANDOMIZED PHASE 3 TRIAL OF CONTINUOUS VS. INTERMITTENT MAINTENANCE THERAPY WITH ZANUBRUTINIB AS UPFRONT TREATMENT IN OLDER PATIENTS WITH MANTLE CELL LYMPHOMA (INTERCON).

WINSHIP 5186-20: AN OPEN-LABEL PHASE II TRIAL OF ACALABRUTINIB PLUS OBINUTUZUMAB IN PATIENTS WITH UNTREATED, LOW TUMOR BURDEN FOLLICULAR LYMPHOMA AND OTHER INDOLENT NON-HODGKIN LYMPHOMAS.

EAA173: A PHASE III STUDY COMPARING OVERALL SURVIVAL IN PATIENTS WITH HIGH-RISK SMOLDERING MULTIPLE MYELOMA RANDOMIZED TO DARATUMUMAB- HYALURONIDASE SUBCUTANEOUS (SC)-REVLIMID-DEXAMETHASONE OR REVLIMID- DEXAMETHASONE .

10440: A PHASE 1/1A STUDY OF VENETOCLAX, MLN9708 (IXAZOMIB CITRATE) AND DEXAMETHASONE FOR RELAPSED/REFRACTORY LIGHT CHAIN AMYLOIDOSIS.

CHALLENGES AND OPPORTUNITIES ENCOUNTERED

Significant interest in collaborating sites but challenges devoting resources to these efforts due to limited staffing and infrastructure.

The regulatory process is different for IITs, NCTN, and Industry-sponsored trials.

Regulatory requirements and protocol-mandated activities can be onerous for patients and study teams.

Need for additional buy-in from industry collaborators to support opening trials at smaller, community sites.

HOW TO GET INVOLVED AND TO CONTACT US



404-778-0839

We have a dedicated BCTN phone line available where sites and partners can contact the BCTN Team during the hours of 9am - 5pm with any questions or concerns.



GABCTN@emory.edu

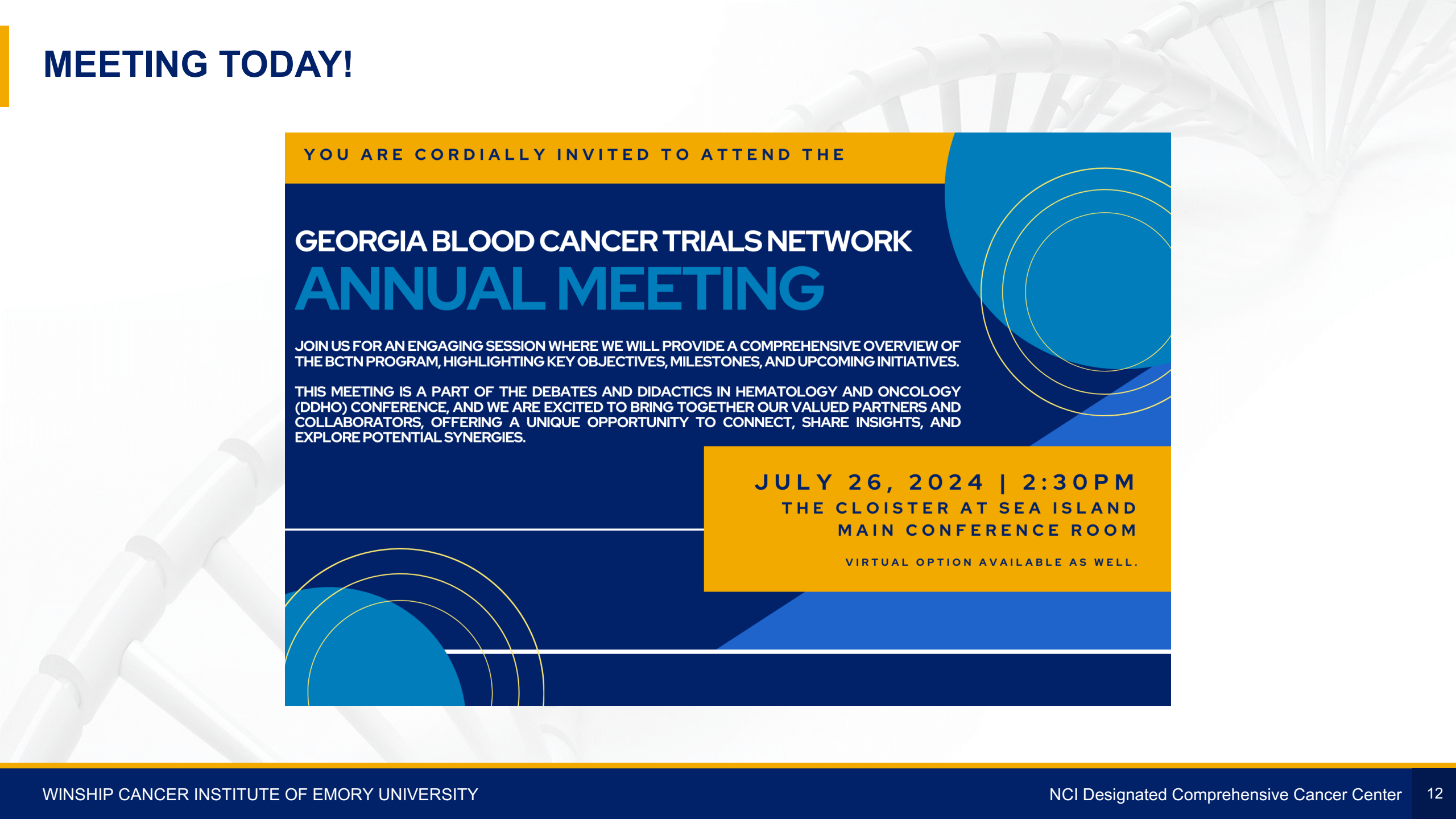
The BCTN Team is also available via email to answer any inquiries and provide regular updates to our sites and collaborators.



BCTN SharePoint

We are delighted to provide a BCTN SharePoint where our sites and partners can stay updated on available trials and additional BCTN information.

MEETING TODAY!



YOU ARE CORDIALLY INVITED TO ATTEND THE

GEORGIA BLOOD CANCER TRIALS NETWORK ANNUAL MEETING

JOIN US FOR AN ENGAGING SESSION WHERE WE WILL PROVIDE A COMPREHENSIVE OVERVIEW OF THE BCTN PROGRAM, HIGHLIGHTING KEY OBJECTIVES, MILESTONES, AND UPCOMING INITIATIVES.

THIS MEETING IS A PART OF THE DEBATES AND DIDACTICS IN HEMATOLOGY AND ONCOLOGY (DDHO) CONFERENCE, AND WE ARE EXCITED TO BRING TOGETHER OUR VALUED PARTNERS AND COLLABORATORS, OFFERING A UNIQUE OPPORTUNITY TO CONNECT, SHARE INSIGHTS, AND EXPLORE POTENTIAL SYNERGIES.

JULY 26, 2024 | 2:30PM
THE CLOISTER AT SEA ISLAND
MAIN CONFERENCE ROOM

VIRTUAL OPTION AVAILABLE AS WELL.

THANK YOU

