

02.24.2021

AN ACCREDITED CONTINUING EDUCATION SERIES WITH THE EXPERTS

# Addressing Disparities in Cancer Care and Incorporating Precision Medicine for Minority Populations

This activity is jointly provided by the University of Nebraska Medical Center and Bio Ascend



# What do we mean when we say “disparities in cancer care”

**Cancer occurrence and outcomes vary considerably between racial and ethnic groups**

# Disease-specific disparities

NH black women remain **80% more likely to die** from **cervical cancer** than NH white women<sup>2</sup>

**Breast cancer** death rates were **40% higher** for black women compared with white women in every state of the US, with some states as much as 60% higher including Louisiana and Mississippi<sup>1</sup>

Cancer death rates are also higher in cancers of the **stomach, uterine corpus (endometrial)** for NHB compared to NHW<sup>2</sup>

Incidence and death rates of **multiple myeloma** are **double** for NH blacks compared to NH whites<sup>2</sup>

Lung cancer is the second leading cause of death for men and women, with death rates for NH black men being 20% higher than NH white men<sup>2</sup>

Black men have the highest prostate cancer death rate compared to other racial or ethnic groups, and the death rate for black men is 2.2 times higher than the death rate for white men<sup>2</sup>

**Colorectal cancer** death rates are **47% higher in NHB men and 34% higher in NH black women** compared to NHW men and women<sup>2</sup>

1. American Cancer Society. Breast Cancer Facts & Figures 2019-2020. Atlanta: American Cancer Society, Inc. 2019. 2. American Cancer Society. Cancer Facts & Figures for African Americans 2019-2021. Atlanta: American Cancer Society, 2019.

# Sources of disparities – Social determinants of health

Structural racism leads to higher exposure to risk factors

## Prevention

- Polyp removal for CRC
- HPV vaccine and detection for cervical cancer

## Early detection

• Screening for:

- Cervical Cancer
- Lung Cancer
- Colorectal Cancer
- Breast Cancer

## Access to treatment

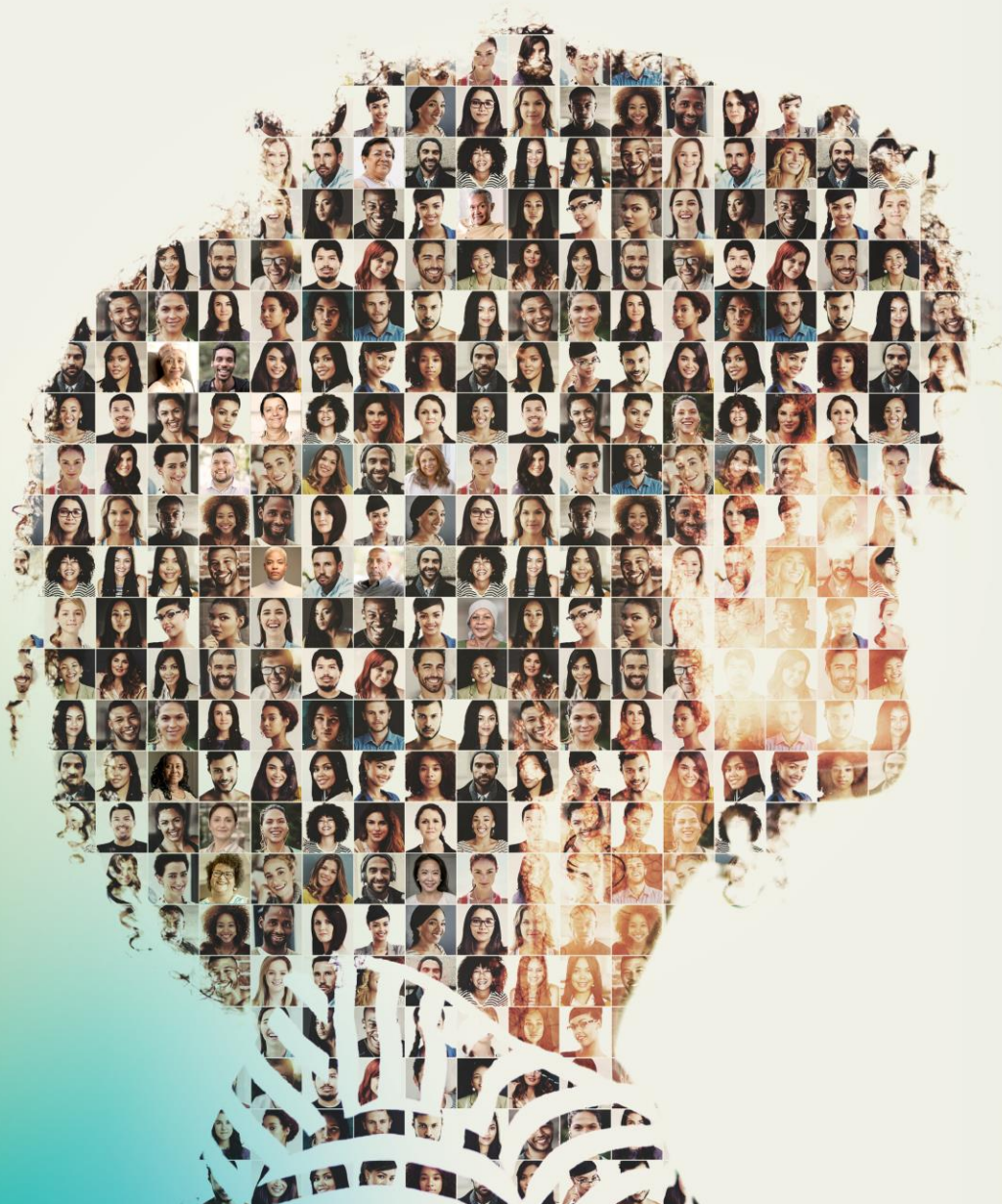
- Prostate cancer
- Multiple myeloma

# How can we address disparities?

- Community outreach
- Clinical trial representation – participants and research team
- Equitable access to advances in precision medicine

# Effects of the pandemic on cancer care

- Lower rates of screening
- Increased differences in social determinants of health



AN ACCREDITED CONTINUING EDUCATION SERIES WITH THE EXPERTS

---

# Addressing Disparities in Cancer Care and Incorporating Precision Medicine for Minority Populations